

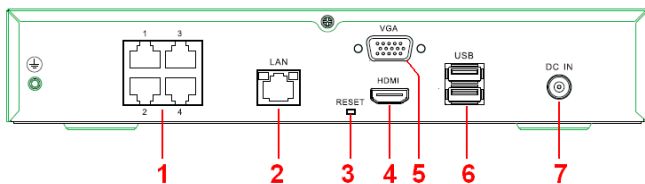
Vortec 4 Camera NVR



Product Features

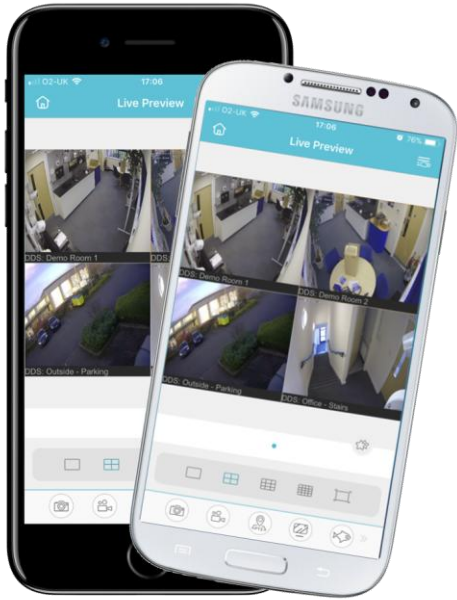
- NVR with H.264 Compression
- Up to 4 Channel with POE
- Full HD in Live, Recording & Playback
- Supports up to 6MP cameras
- HDMI and VGA output in Full HD
- Dual Streaming
- Real Pentaplex Operation (Live, Recording, Playback, Backup, Network)
- Smart Apps (iOS, Android)
- Supports up to 1 HDD (max 6TB)

Interface



1. POE camera ports
2. Local network port
3. Reset button
4. HDMI output
5. VGA output
6. USB ports
7. DC power supply

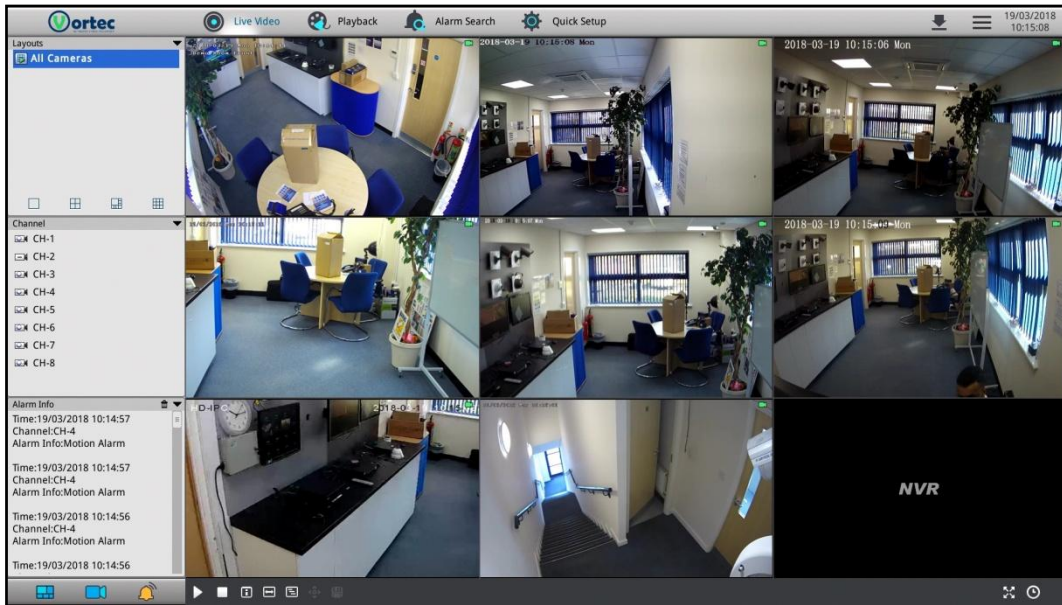
NVR Specification	
Model	SN-NVR-4EP
Video/Audio Input	
Video Input:	4ch H.264
Incoming Bandwidth:	40Mbps (main stream 32Mbps, sub stream 8Mbps)
Outgoing Bandwidth:	80Mbps
Audio Input:	G711_A/G711_U
Supported Technologies:	IP
Video/Audio Output	
Live View/ Playback/Recording Resolution:	6MP/5MP/4MP/3MP/1080P/ 720P/D1/VGA/CIF/QCIF
Frame Rate:	6MP, 5MP, 4MP, 3MP@15fps, 1080fps@25fps
Live View:	4ch 1080P/1ch 6MP @30fps
Playback Capacity:	4ch 1080P, 1ch 6MP/5MP/4MP
HDMI Output:	1920x1080, 1280x720, 1024x768
VGA Output:	1920x1080, 1280x720, 1024x768
Audio Output:	N/A
Hard Disk	
Drive quantity:	Up to 1 SATA drives
Drive capacity:	Up to 6TB
Network	
Network Interface:	1 RJ45 10M/100M
Protocol:	RTP/RTCP, TCP/UDP ,HTTP, DHCP, DNS, NTP
POE Interface:	4Ch 100Mbps, IEEE802.3af
POE Max Power:	36W
General	
Power Supply:	DC48V/1.35A
Power Consumption:	Max 10W (without HDD, USB, POE)
Operating Temperature:	0°C ~ 45°C
Operating Humidity:	0% - 90% RH
Chassis:	1U
Product Dimensions:	255mm(W) x 235mm(D) x 47.5mm(H)



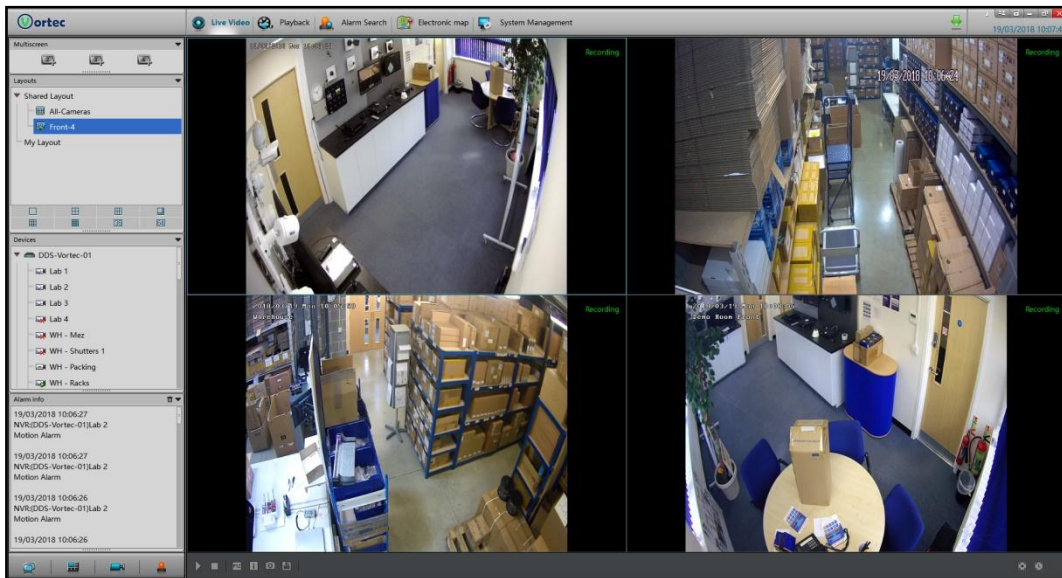
Inview Pro 3

Smartphone App

Application	
Supported OS:	Windows 7+
Remote Software:	Internet Explorer 9+, IMS
Supported Devices:	iOS, Android
Mobile App:	InView Pro 3
Notifications:	Email
Interface	
Video Outputs:	HDMI (x1), VGA (x1)
USB:	USB 2.0 (x2)
Audio I/O:	N/A
Alarm I/O:	N/A
Reset Button:	Yes
PTZ Control:	Onvif
Control:	Mouse control



NVR Interface



IMS Interface