

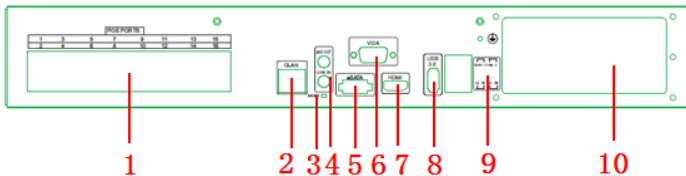
# Vortec 32 Camera NVR (with 16 POE ports)



## Product Features

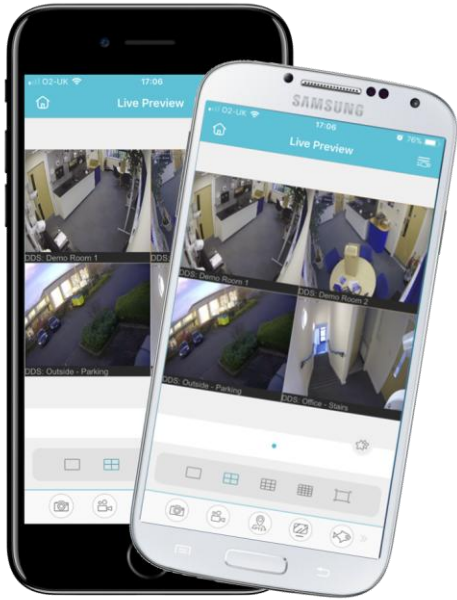
- NVR with H.264/H.265 Compression
- Up to 32 Channels
- Full HD in Live, Recording & Playback
- Supports up to 8MP (4K) cameras
- HDMI output in 4K
- Dual Streaming
- Real Pentaplex Operation (Live, Recording, Playback, Backup, Network)
- Smart Apps (iOS, Android)
- Supports up to 4 HDD's (max 24TB)

## Interface



1. POE camera ports
2. Local network port
3. Reset button
4. Audio I/O
5. eSATA output
6. VGA output
7. HDMI output (4K)
8. USB 3.0 port
9. Alarm I/O
10. AC110/220V power supply

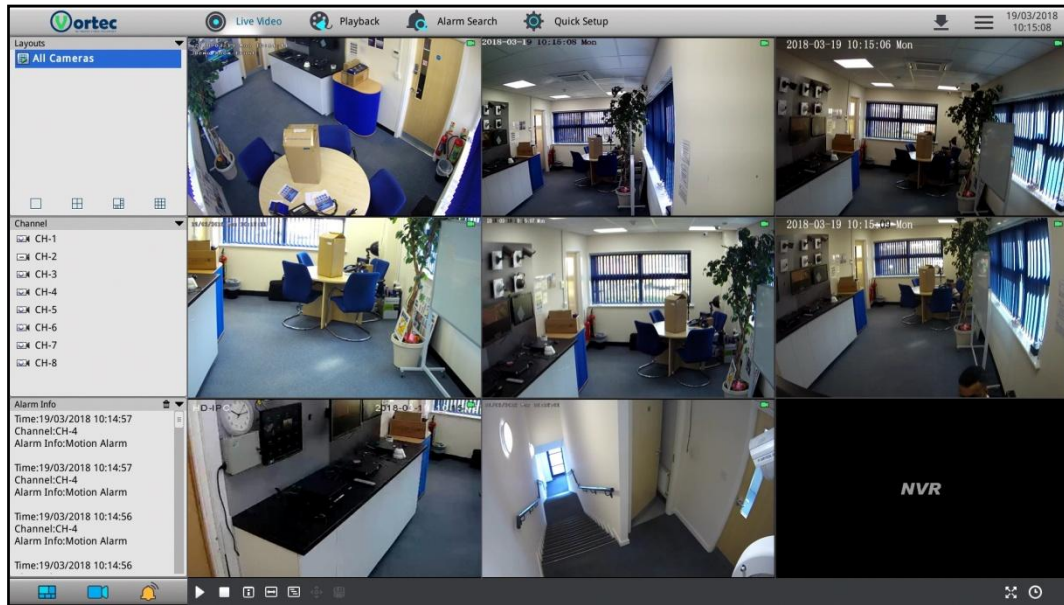
<b>NVR Specification</b>	
<b>Model</b>	<b>SN-NVR-32EP16</b>
<b>Video/Audio Input</b>	
Video Input:	32ch H.264/H.265
Incoming Bandwidth:	256Mbps (main stream 192Mbps, sub stream 64Mbps)
Outgoing Bandwidth:	Upto 16ch (256Mbps)
Audio Input:	G711_A/G711_U
Supported Technologies:	IP
<b>Video/Audio Output</b>	
Live View/ Playback/Recording Resolution:	8MP/6MP/5MP/4MP/3MP/ 1080P/720P/D1/VGA/CIF/QCIF
Frame Rate:	8MP, 6MP, 5MP, 4MP, 3MP, 1080P@30fps
Live View:	32ch 720p/16ch 1080P/8ch 4MP/4ch 8MP @30fps
Playback Capacity:	16ch 1080P/8ch 4MP/4ch 8MP/1ch 12MP
HDMI Output:	3840x2160, 1920x1080
VGA Output:	1920x1080,1280x720,1024x768
Audio Output:	1ch, Line out
<b>Hard Disk</b>	
Drive quantity:	Up to 4 SATA drives
Drive capacity:	Up to 6TB each
<b>Network</b>	
Network Interface:	1 RJ45 10M/100M/1000M
Protocol:	RTP/RTCP, TCP/UDP ,HTTP, DHCP, DNS, NTP
POE Interface:	16Ch 100Mbps, IEEE802.3af/802.3at
POE Max Power:	140W
<b>General</b>	
Power Supply:	AC110/220V
Power Consumption:	Max 15W (without HDD, USB, POE)
Operating Temperature:	-10°C ~ 45°C
Operating Humidity:	0% - 90% RH
Chassis:	1.5U
Product Dimensions:	440mm(W) x 376mm(D) x 67mm(H)



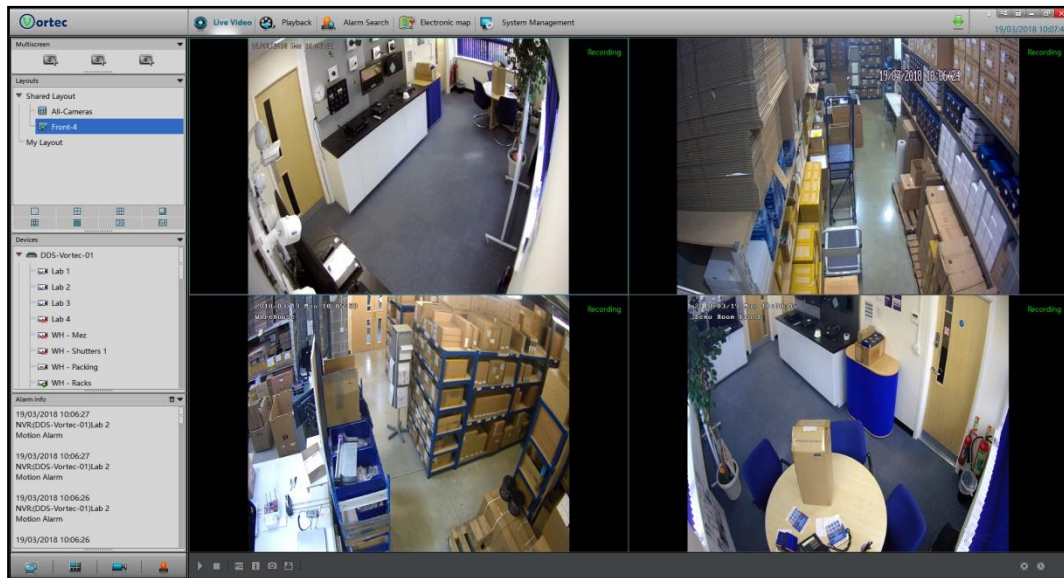
Inview Pro 3

Smartphone App

<b>Application</b>	
Supported OS:	Windows 7+
Remote Software:	Internet Explorer 9+, IMS
Supported Devices:	iOS, Android
Mobile App:	InView Pro 3
Notifications:	Email
<b>Interface</b>	
Video Outputs:	HDMI (x1), VGA (x1)
USB:	USB 2.0 (x2), USB 3.0 (x1)
Audio I/O:	Microphone in (x1), Audio line out (x1)
Alarm I/O:	Alarm input (x2), Alarm output (x2)
Reset Button:	Yes
PTZ Control:	Onvif
Control:	Mouse control



NVR



IMS Interface