

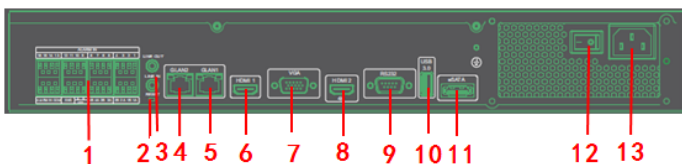
Vortec 32 Camera NVR



Product Features

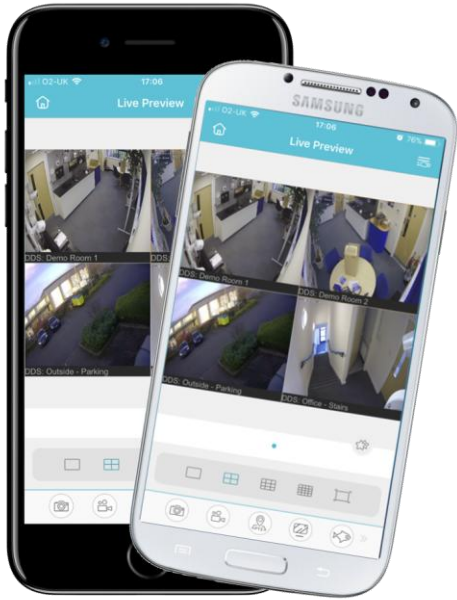
- NVR with H.264/H.265 Compression
- Up to 32 Channels
- Full HD in Live, Recording & Playback
- Supports up to 8MP (4K) cameras
- HDMI output in 4K
- Dual Streaming
- Real Pentaplex Operation (Live, Recording, Playback, Backup, Network)
- Smart Apps (iOS, Android)
- Supports up to 8 HDD's (max 32TB)

Interface



1. Alarm I/O and RS485
2. Reset
3. Audio I/O
4. Local network 1 port
5. Local network 2 port
6. HDMI1 output (1080P)
7. VGA output
8. HDMI2 output (4K)
9. RS232 output
10. USB port
11. eSATA output
12. Power ON/OFF switch

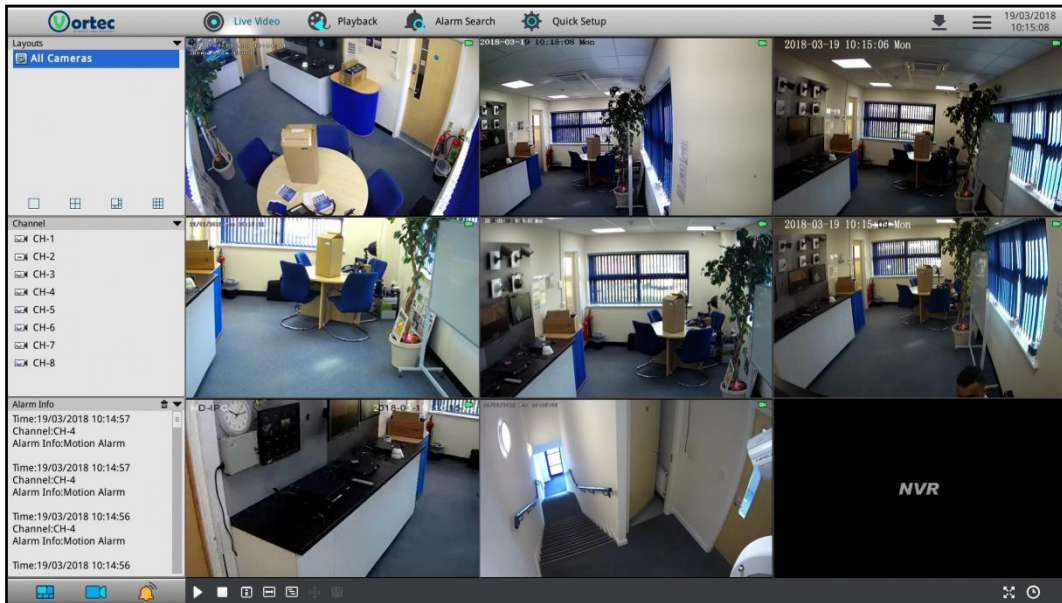
NVR Specification	
Model	SN-NVR-32E-2
Video/Audio Input	
Video Input:	32ch H.264/H.265
Incoming Bandwidth:	256Mbps (main stream 192Mbps, sub stream 64Mbps)
Outgoing Bandwidth:	Upto 16ch (256Mbps)
Audio Input:	G711_A/G711_U
Supported Technologies:	IP
Video/Audio Output	
Live View/ Playback/Recording Resolution:	8MP/6MP/5MP/4MP/3MP/ 1080P/720P/D1/VGA/CIF/QCIF
Frame Rate:	8MP, 6MP, 5MP, 4MP, 3MP, 1080P@30fps
Live View:	32ch 720p/16ch 1080P/8ch 4MP/4ch 8MP @30fps
Playback Capacity:	16ch 1080P/8ch 4MP/4ch 8MP/1ch 12MP
HDMI Output:	HDMI1: up to 1920x1080 HDMI2: 3840x2160
VGA Output:	1920x1080,1280x720,1024x768
Audio Output:	1ch, Line out
Hard Disk	
Drive quantity:	Up to 8 SATA drives
Drive capacity:	Up to 6TB each
Network	
Network Interface:	2 RJ45 10M/100M/1000M
Protocol:	RTP/RTCP, TCP/UDP, HTTP, DHCP, DNS, NTP
POE Interface:	N/A
POE Max Power:	N/A
General	
Power Supply:	AC110/220V
Power Consumption:	Max 16W (without HDD, USB)
Operating Temperature:	-10°C ~ 45°C
Operating Humidity:	0% - 90% RH
Chassis:	2U
Product Dimensions:	440mm(W) x 435mm(D) x 99.8mm(H)



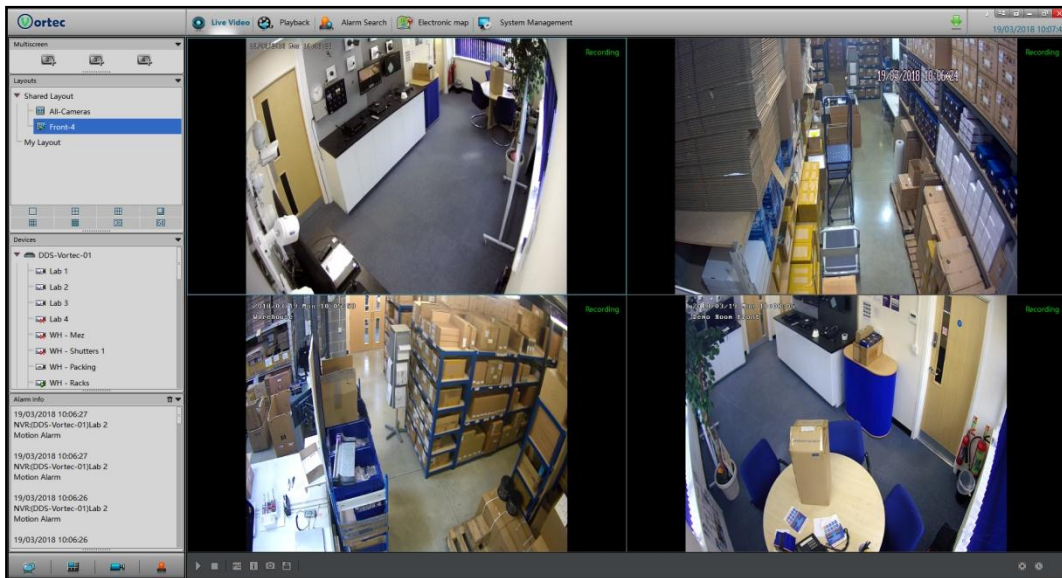
Inview Pro 3

Smartphone App

Application	
Supported OS:	Windows 7+
Remote Software:	Internet Explorer 9+, IMS
Supported Devices:	iOS, Android
Mobile App:	InView Pro 3
Notifications:	Email
Interface	
Video Outputs:	HDMI (x2), VGA (x1)
USB:	USB 2.0 (x2), USB 3.0 (x1)
Audio I/O:	Microphone in (x1), Audio line out (x1)
Alarm I/O:	Alarm input (x16), Alarm output (x4)
Reset Button:	Yes
PTZ Control:	Onvif
Control:	Mouse control



NVR Interface



IMS Interface