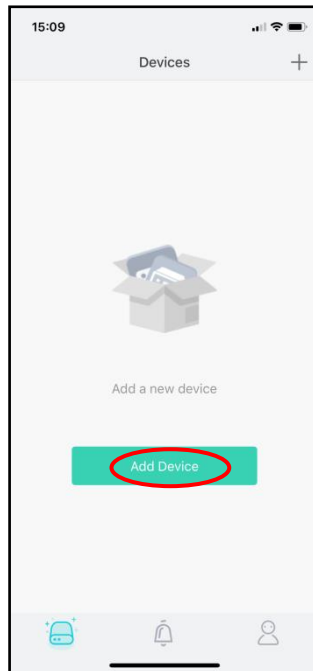
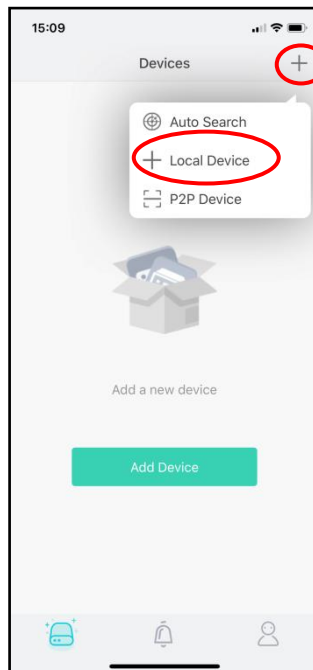


Vortec App Setup (IP/Domain)

1. Download the Inview Pro 4 app from the App Store or Google Play Store
2. Open the app, and then click on **Add Device**

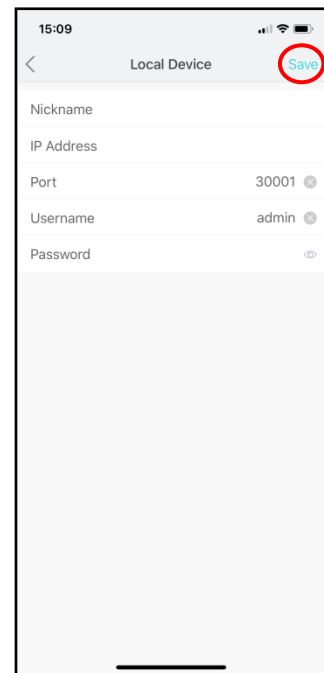


3. Click on the + to open the menu, then click on **Local Device**

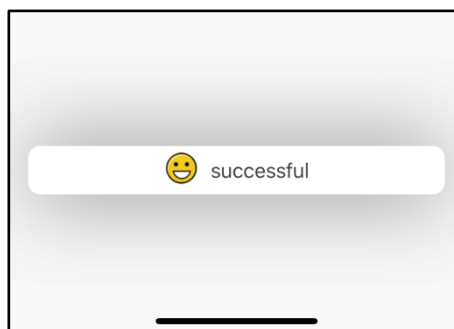


4. This will then show you the following fields. Enter the details as mentioned in the table. Once you have entered the details, click on **Save** in the top-right corner.

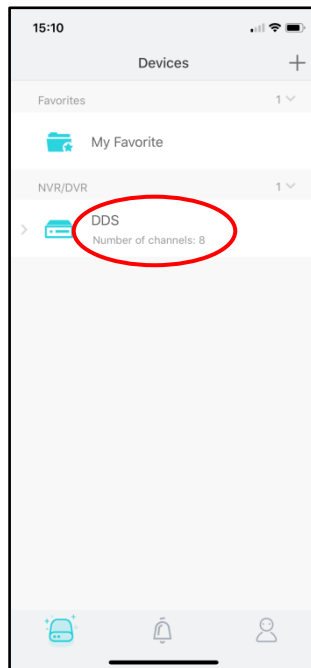
Nickname	<i>Anything you want</i>
Address	<i>IP address or domain name</i>
Port	30001
User Name	admin
Password	<i>Your custom password</i>



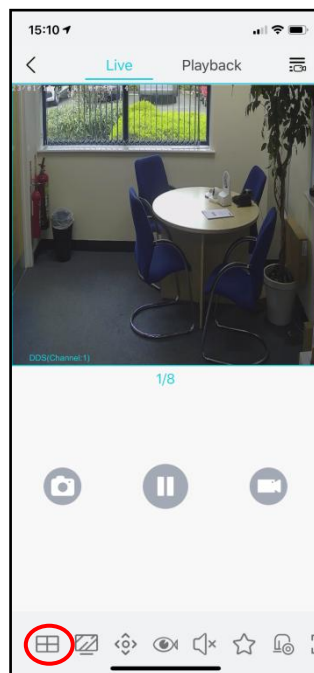
5. You should see this message if the adding was successful.



- Once you have added the NVR, the Devices page should show your NVR with the channel quantity. To start the preview, click on the name of the NVR



- This will start Camera 1. To view additional camera, just swipe from right to left or to view more than 1 camera, click on the **multiview** button



8. This show you the various options for multiview, for up to 16 cameras at once

