

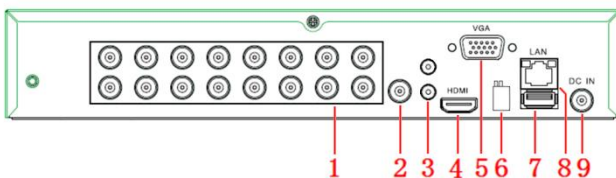
Phoenix 16 Camera DVR (Lite)



Product Features

- Hybrid DVR with H.264 Compression
- Up to 16 Channels
- Supports HD-TVI, CVI, AHD, IP and Analogue
- Supports up to 5MP cameras (TVI)
- HDMI and VGA output in Full HD
- Windows and Mac compatible
- Real Pentaplex Operation (Live, Recording, Playback, Backup, Network)
- Smart Apps (iOS, Android)
- RS-485 PTZ control
- Supports up to 1 HDD (max 6TB)

Interface



1. BNC camera input
2. Composite video output
3. Audio I/O
4. HDMI output
5. VGA output
6. RS-485
7. USB port
8. Local network port
9. DC12V power supply

DVR Specification	
Model	PHD-DVR-16ENJ(LITE)
Video/Audio Input	
Video Input:	TVI@5MP, TVI@1080P, CVI@1080P, AHD@1080P, AHD@720P, IP or 960H
Audio Input:	G726
Supported Technologies:	AHD, TVI, CVI, Analogue, IP
Hard Disk	
Drive quantity:	Up to 1 SATA drives
Drive capacity:	Up to 6TB
Storage And Backup	
Recording Mode:	Manual, Continuous, Schedule, Motion, Sensor, Pre/Post
Playback:	Search by Time, Calendar, Events, Thumbnail
Backup Devices:	Via USB Memory Stick, HDD or over the network
Live View:	1, 4, 9, 13 or 16 screens, Digital Zoom
General	
Power Supply:	DC12V/5A
Power Consumption:	Max 60W
Operating Temperature:	-10°C ~ 55°C
Operating Humidity:	10% - 80% RH
Product Dimensions:	280mm(W) x 203mm(D) x 51mm(H)





Application	
Supported OS:	Windows XP+, MacOS X 10.6+
Remote Software:	Internet Explorer 7+, iCMS Pro, iWatchDVR
Supported Devices:	iOS, Android
Mobile App:	SoCatch
Notifications:	Email or Push
Interface	
Video Outputs:	HDMI (x1), VGA (x1), BNC out (x1)
USB:	USB 2.0 (x2)
Audio I/O:	Microphone in (x1), Audio line out (x1)
Alarm I/O:	N/A
PTZ Control:	RS-485
Control:	Mouse control

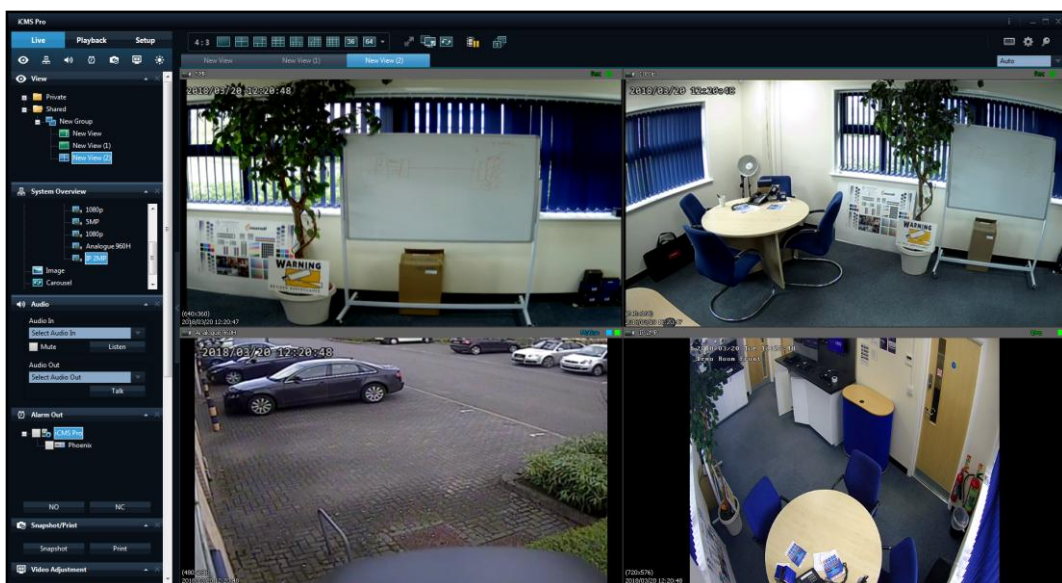


SoCatch

Smartphone App



DVR Interface



CMS Interface