

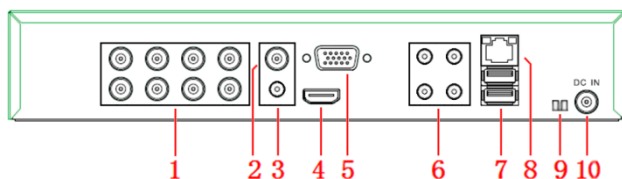
HD-Vision 8 Camera DVR



Product Features

- Hybrid DVR with H.264 Compression
- Up to 8 Channels
- Supports HD-TVI, CVI, AHD, IP and Analogue
- Supports up to 5MP cameras (IP)
- HDMI and VGA output in Full HD
- Windows compatible
- Fanless design
- Real Pentaplex Operation (Live, Recording, Playback, Backup, Network)
- Smart Apps (iOS, Android)
- RS-485 PTZ control
- Supports up to 1 HDD (max 6TB)

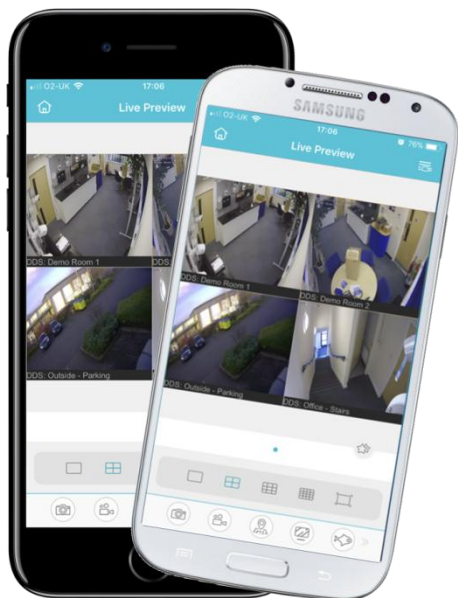
Interface



1. BNC camera input
2. Composite video output
3. Audio output
4. HDMI output
5. VGA output
6. Audio input
7. USB port
8. Local network port
9. RS-485
10. DC12V power supply

DVR Specification	
Model	SN-DVR-8HDV
Video/Audio Input	
Video Input:	8ch x 1080P (BNC) 8ch x 1080P (BNC + IP) 8ch x 1080P/3MP/5MP (IP)
Audio Input:	G711_A
Supported Technologies:	AHD, TVI, CVI, Analogue, IP
Decode Ability:	8ch x 1080P @ 12fps
Encode Ability:	8ch x 1080P @ 12fps
Hard Disk	
Drive quantity:	Up to 1 SATA drives
Drive capacity:	Up to 6TB
Storage and Backup	
Recording Mode:	Manual, Continuous, Schedule, Motion, Sensor, Pre/Post
Playback:	Search by Time, Calendar, Events, Thumbnail
Backup Devices:	Via USB Memory Stick, HDD or over the network
Live View:	1, 4 or 9 cameras
General	
Power Supply:	DC12V/2A
Operating Temperature:	-10°C ~ 50°C
Product Dimensions:	255mm(W)x 255mm(D)x 45mm(H)

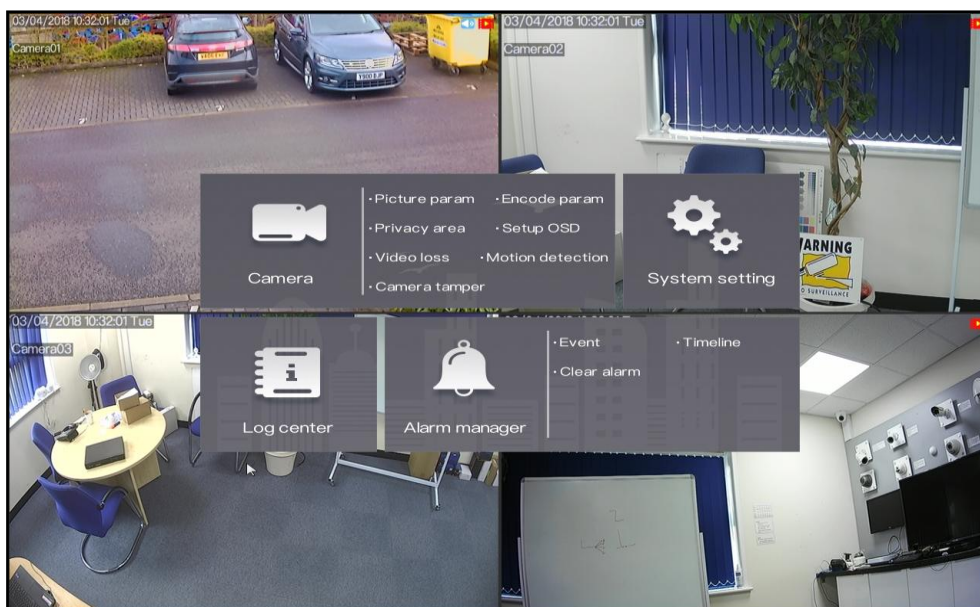




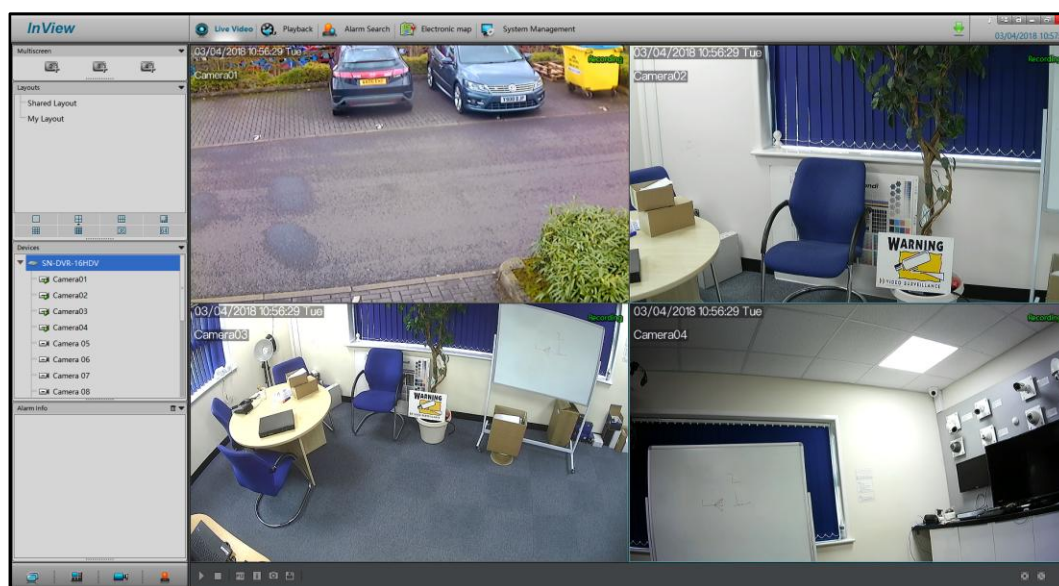
Inview Pro 3

Smartphone App

Application	
Supported OS:	Windows 7+
Remote Software:	Internet Explorer 9+, CMS
Supported Devices:	iOS, Android
Mobile App:	InView Pro 3
Notifications:	Email
Interface	
Video Outputs:	HDMI (x1), VGA (x1), BNC out (x1)
USB:	USB 2.0 (x3)
Audio I/O:	Microphone in (x4), Audio line out (x1)
PTZ Control:	RS-485
Control:	Mouse control



DVR



CMS