

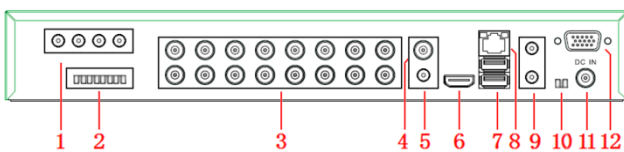
HD-Vision 16 Camera DVR



Product Features

- Hybrid DVR with H.264 Compression
- Up to 16 Channels
- Supports HD-TVI, CVI, AHD, IP and Analogue
- Supports up to 5MP cameras (IP)
- HDMI and VGA output in Full HD
- Windows compatible
- Real Pentaplex Operation (Live, Recording, Playback, Backup, Network)
- Smart Apps (iOS, Android)
- RS-485 PTZ control
- Supports up to 2 HDD's (max 12TB)

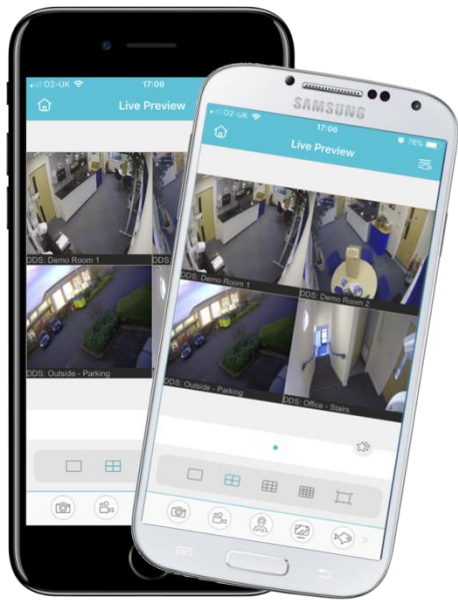
Interface



1. Audio input
2. Alarm I/O
3. BNC camera input
4. Composite video output
5. Audio output
6. HDMI output
7. USB ports
8. Local network port
9. Audio input
10. RS-485
11. DC12V power supply
12. VGA output

DVR Specification	
Model	SN-DVR-16HDV
Video/Audio Input	
Video Input:	16ch x 1080P (BNC) 16ch x 1080P (BNC + IP) 16ch x 1080P/3MP/5MP (IP)
Audio Input:	G711_A
Supported Technologies:	AHD, TVI, CVI, Analogue, IP
Decode Ability:	16ch x 1080P @ 12fps
Encode Ability:	16ch x 1080P @ 12fps
Hard Disk	
Drive quantity:	Up to 2 SATA drives
Drive capacity:	Up to 6TB each
Storage and Backup	
Recording Mode:	Manual, Continuous, Schedule, Motion, Sensor, Pre/Post
Playback:	Search by Time, Calendar, Events, Thumbnail
Backup Devices:	Via USB Memory Stick, HDD or over the network
Live View:	1, 4, 9 or 16 cameras
General	
Power Supply:	DC12V/4A
Operating Temperature:	-10°C ~ 50°C
Product Dimensions:	350mm(W)x 295mm(D)x 45mm(H)



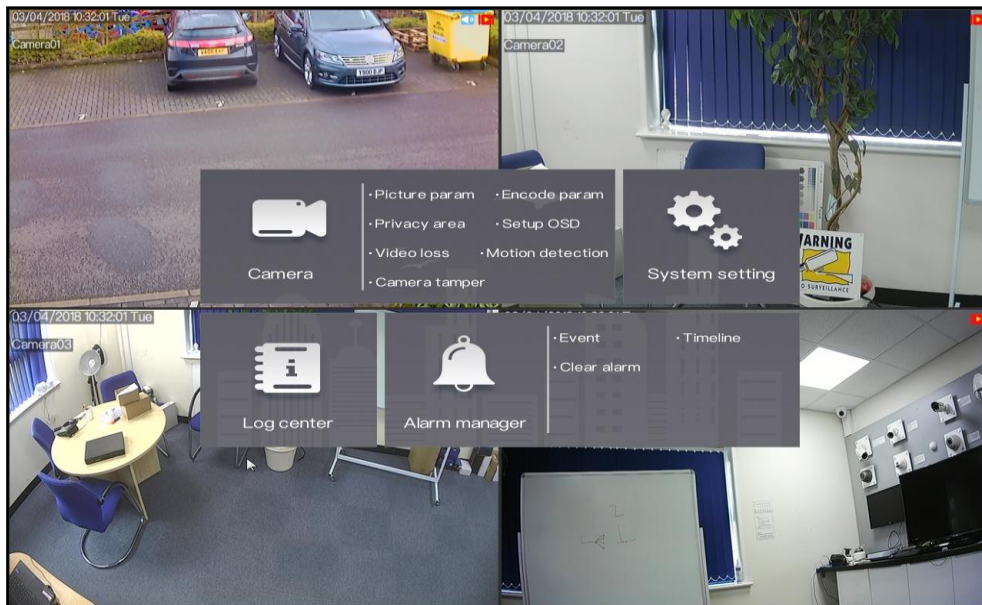


Application	
Supported OS:	Windows 7+
Remote Software:	Internet Explorer 9+, CMS
Supported Devices:	iOS, Android
Mobile App:	InView Pro 3
Notifications:	Email
Interface	
Video Outputs:	HDMI (x1), VGA (x1), BNC out (x1)
USB:	USB 2.0 (x3)
Audio I/O:	Microphone in (x6), Audio line out (x1)
Alarm I/O:	Alarm input (x4), Alarm output (x1)
PTZ Control:	RS-485
Control:	Mouse control

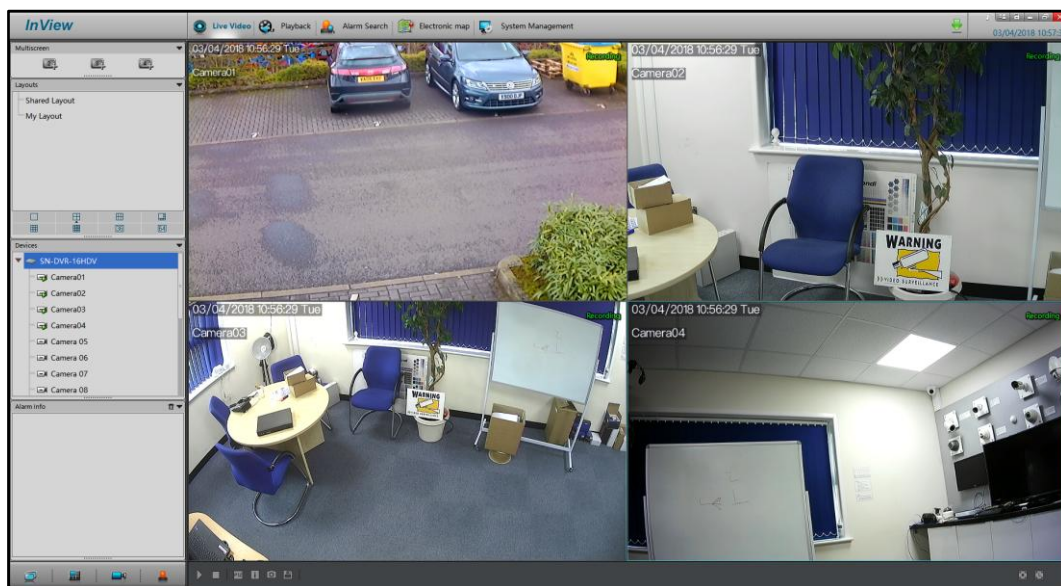


Inview Pro 3

Smartphone App



DVR



CMS