

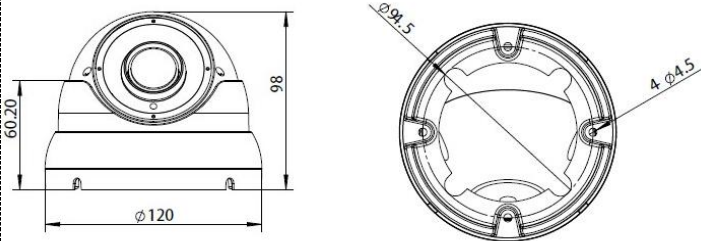
# Advanced Eyeball Dome Camera



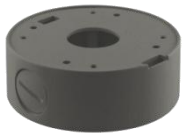
## Product Features

- Sony Starvis chipset
- Image Resolution: 1920 x 1080 pixels
- Advanced H.264 compression, dual stream
- 24pcs SMD IR LEDs, IR range 25-30m
- Smart IR (IR-cut filter)
- 2.7-13.5mm motorised lens (auto focus)
- dWDR, DNR, BLC (auto)
- Supports AHD, TVI, CVI and Analogue
- IP66 rated
- Dark Grey or White

## Dimensions



## Accessories



B170(G)



B170(W)



JB-779(G)



JB-779(W)

<b>Camera Specification</b>	
<b>Model</b>	<b>AT1080-779SAF</b>
<b>Camera</b>	
Image Sensor:	Sony Starvis CMOS (1/2.8")
Resolution:	2.1MP
Effective Pixels (H x V):	1920 x 1080
TV System:	PAL / NTSC
Shutter Speed:	1/25s-1/50000
Signal-to-noise Ratio:	≥50dB
Iris:	Electronic
Back Light Compensation:	Auto
Wide Dynamic Range:	dWDR
Digital Noise Reduction:	2D/3D
Gain Control:	Auto
Sync Mode:	Internal
White Balance:	Auto/Manual
Lens:	Motorised 2.7-13.5mm Lens
Field of View:	95°~ 20°
Up-the-Coax Control:	Yes
Scanning:	Progressive Scan
<b>Day/Night</b>	
Day & Night:	IR Cut Filter (Smart IR)
Minimum Illumination:	0.1 Lux
Infrared LEDs:	14μ x 24pcs SMD
IR Range:	25-30m
IR Status:	Below 10 Lux by CDS
IR Control:	CDS Auto
<b>General</b>	
Power:	12V DC (+/- 10%), 800mA
Housing:	Metal
Operating Temperature:	-10°C ~ +50°C
Operating Humidity:	0% - 95% RH
Ingress Protection:	IP66
Approvals:	CE / FCC
Weight:	800g