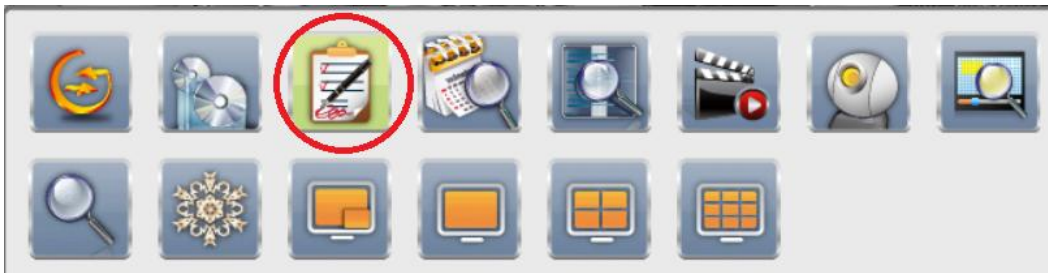




Setting Motion Detection

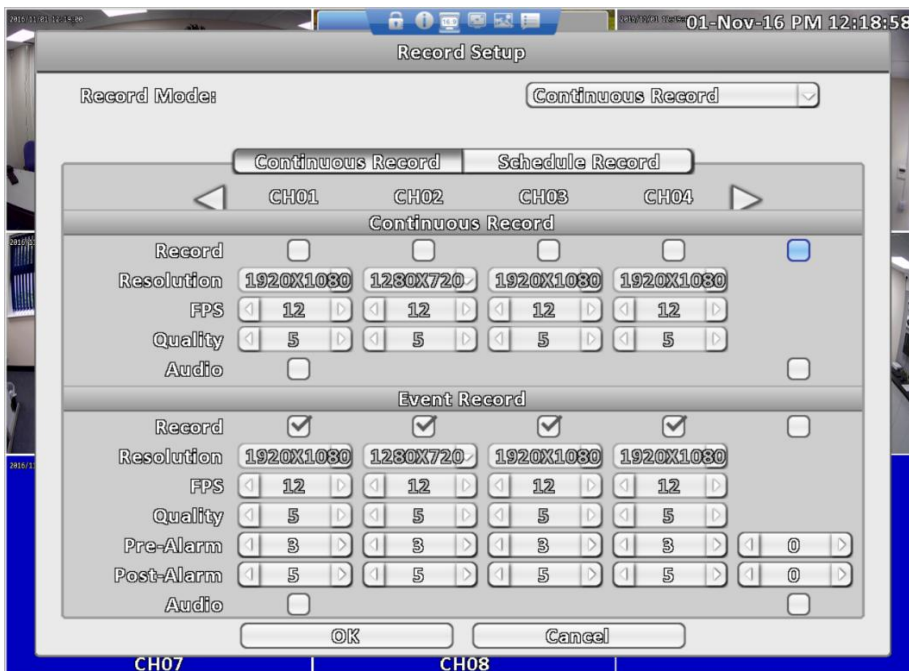
To set the DVR to record on motion you will need to go to the **Configure** icon in the main menu, this is shown below:



Then click the **Record Setup**, icon is circled below:



This will open the following menu; in here you will need to **tick the Continuous Record** tick boxes for all the channels which you would like to be on motion recording. Then you will need to make sure that all **corresponding Event Record boxes are ticked**. Your settings should look similar to the below:



Once you have matched the settings you will need to click the **OK** button. Then **right click**, this will take you back to the previous menu. Once in the previous menu, click the **Event Setup** Icon shown below:



This will open a new menu; here you will need to click the **motion detection tab** along the top of the menu page. Now you will need to **tick the Enable box** for all the cameras you are setting for constant record. The setting should be similar to the below example:



Once you have done this simply click the **OK** button to save the changes. Once this is done your Phoenix will now be set for motion recording on channels you have just changed.

Setting Motion Areas:

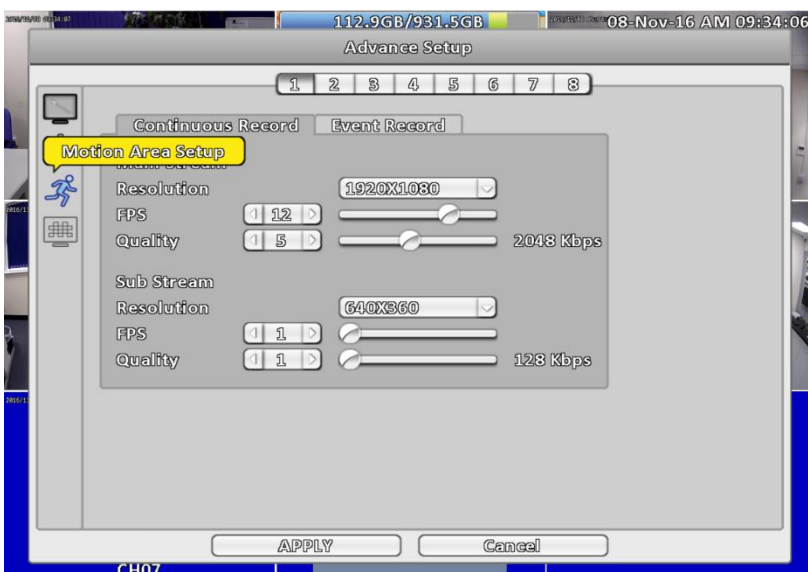
To set the DVR to record on motion you will need to go to the **Configure** icon in the main menu, this is shown below:



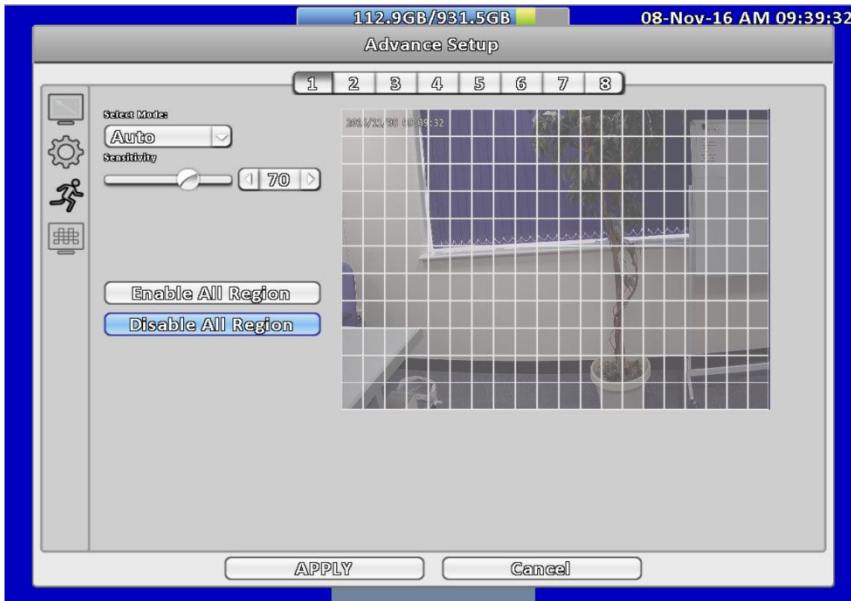
Then please go to **Camera Setup**, this is shown below:



This will open the Camera Setup; you will then need to go to the **Advanced Setup** button towards the bottom of the screen. This will open the following screen, you will then need to click the **Motion Area Setup** shown in the below image:



Once you have click Motion Area Setup as shown above you the menu shown below will be displayed:



The above screen is an example of the **whole area set for motion detection**; the sections which are **clear** are the sections where motion detection is **NOT enabled**. The sections which are highlighted are the areas where motion detection **IS enabled**. Once you have done this simply click **APPLY** and this will save all your settings you have set.