

Controlling PTZ via the Phoenix/ Setting up tours via the Phoenix

Once the PTZ is connected to the DVR via the RS-485 ports you will need to assign the PTZ information to the specific channel you have connected it to.

To do this;

> **RIGHT CLICK** and choose **CONFIGURE**



> Next choose **CAMERA SETUP**.



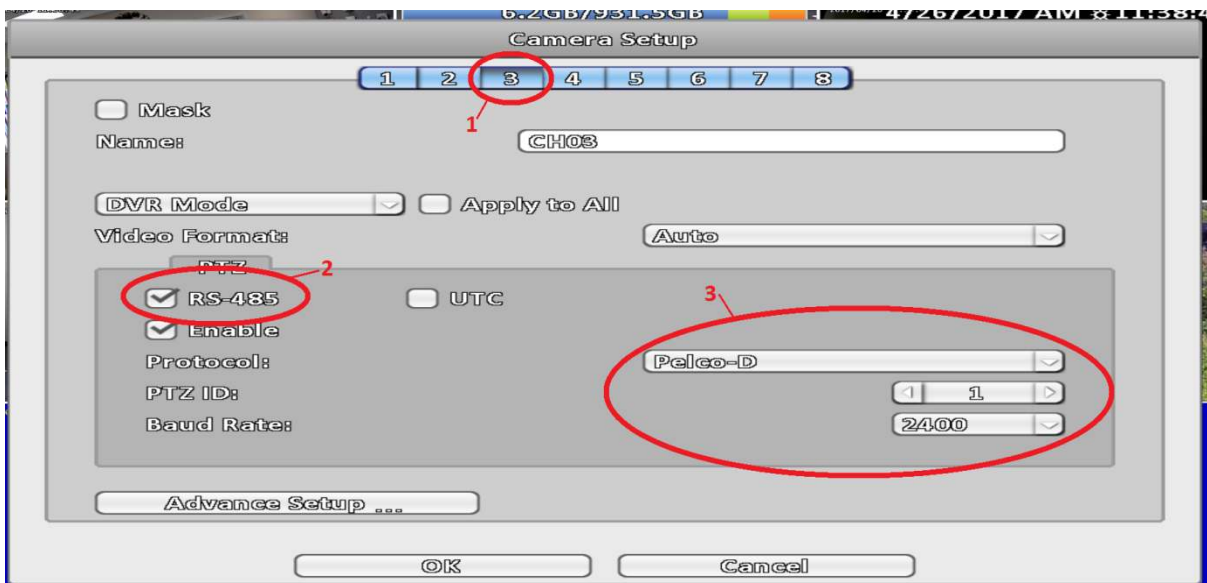
> In **CAMERA SETUP** select which channel the PTZ is connected to (1) then enable **RS-485** (2). You will now be able to edit the **Protocol**, **PTZ ID** and **Baud Rate**.

By default the **TVI1080-SD85-10IR** is set to the following;

PTZ ID - 1

Protocol - Pelco D

Baud Rate - 2400



> Once complete press **OK** and then exit all the menus.

Controlling PTZ via the Phoenix

Once you have set the above you will be able to control the PTZ.

> To bring up the PTZ control **RIGHT CLICK** from the live view and select **PTZ**.



> You should now see the below **PTZ CONTROL PANEL** on screen.



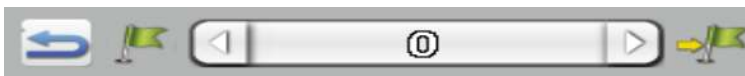
- PTZ Zoom in and out



- PTZ Focus in and out



- PTZ Iris open and close



- PTZ preset control



- Set Preset position



- Call (move to) Preset position



You can move the PTZ by clicking in the direction of each side of the red plus icon.

For example - If you click above the red cross the PTZ will move **UP**.

Setting a Preset position via the Phoenix

To set a preset position;

> First move the camera into the position you want. Then via the **PTZ CONTROL PANEL**(below) click on the 0 and then type a number you wish to assign the preset to. (make sure you avoid number 95)



> Once you have selected the number you wish to assign the position to press the **RETURN** button.

> To save the position press the **SET PRESET*** button.

 - **Set** Preset position*

You can now move the PTZ to the preset position instantly by typing in the position number then pressing the **CALL PRESET*** button.

 - **CALL** Preset position*

Setting additional positions

To set additional positions simply repeat the above steps however choose a different preset number to assign the next position to.

Setting a Tour via the Phoenix

Setting up a Tour (of the preset positions) will require you to access the PTZs on screen display.

To access this;

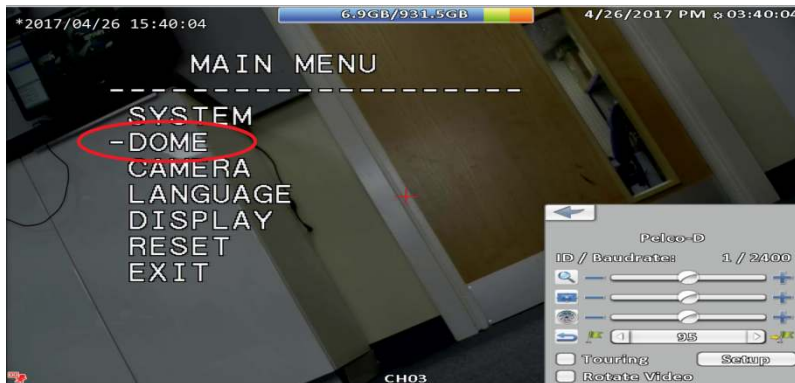
> First open the **PTZ CONRTOOL PANEL**.

> Next enter **95** then press the **CALL PRESET** button.

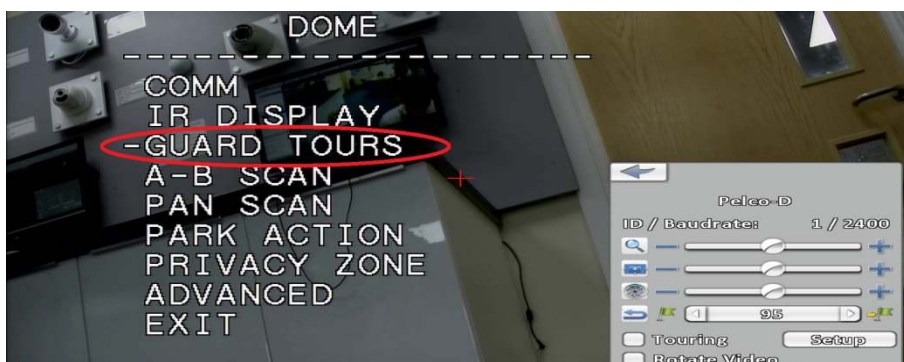


> You should now see the PTZ menu overlaying the video feed (see image below)

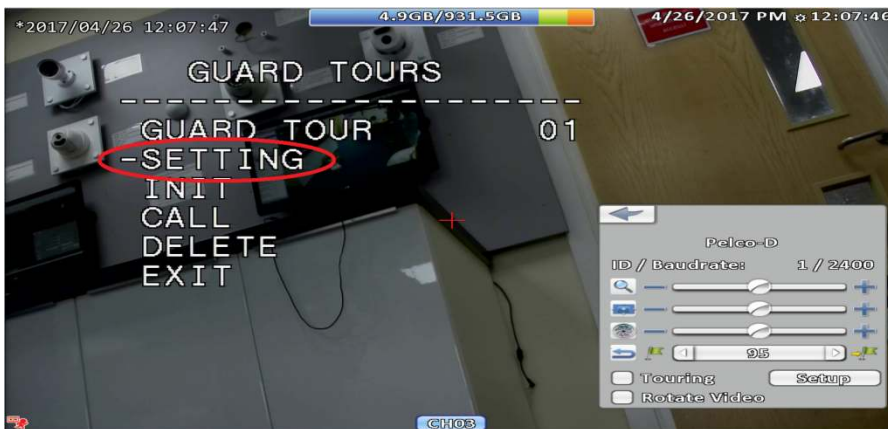
> Navigate to the **DOME** option (navigate the same way you would control the PTZ). Click the right hand side of the **RED CROSS** to enter the **DOME** menu.



> In the **DOME** menu navigate to the **GUARD TOUR** option.



> In the **GUARD TOURS** menu navigate to the **SETTING** option.



> You will now see the **GUARD TOUR** menu.

In here you will see the following;

ID - This will indicate the order the tour will go to each position.

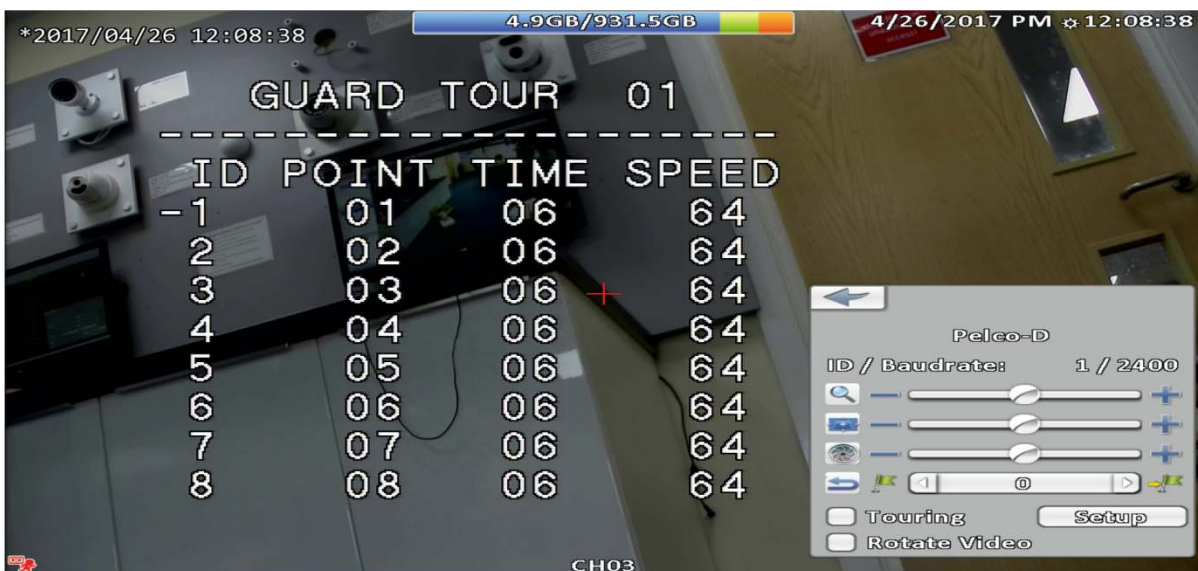
POINT - This is the position number.

TIME - This will indicate how long the PTZ will pause on each position before moving to the next.

SPEED - This will indicate how quick the PTZ will move between each position.

Navigate up and down to move to each ID then press **RIGHT** to select Point, Time and Speed. (move up and down to scroll through digits)

Once you have set the order you want press left to move out of this menu.



> You should now be back at the first **GUARD TOURS** menu. Select **CALL** to run your tour.

Setting a Park Action via the Phoenix

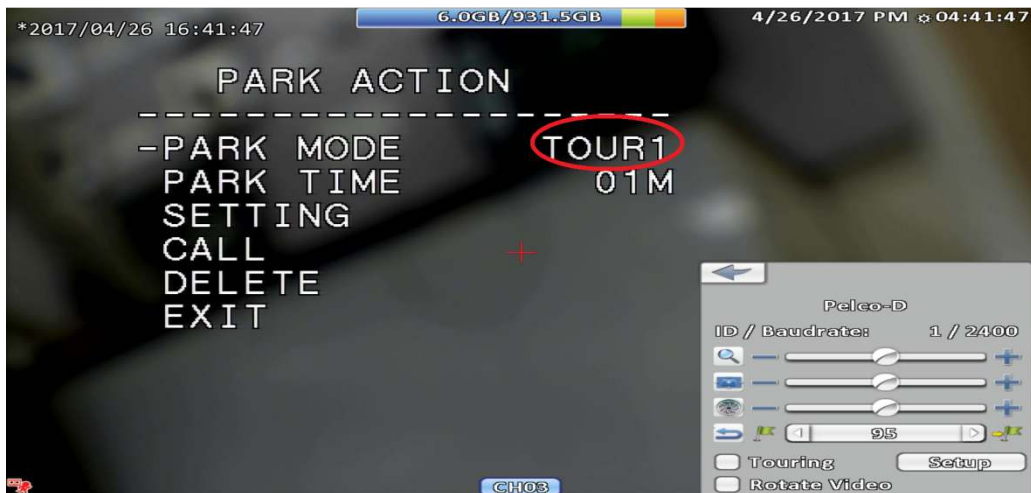
You may want to set the PTZ so after being left idle for X minutes it will move to a preset or begin a tour. This feature is called **Park Action**.

To set is;

> Call preset 95 to open the PTZs on screen display.

> Next navigate to the **DOME** option.

> Next select **PARK ACTION**.



> In the **Park Action** menu you will be able to set the **PARK MODE** to either a tour or a preset. Press **RIGHT** to select it then up and down to scroll through the options.

> The **Park Time** will indicate how long the PTZ needs to remain idle for before activating the **Park Action**.

> Once set navigate to **EXIT**