



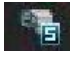
Netviewer Manual

Avenger Netviewer

Preview

From the **PREVIEW SCREEN** you are able to live view your cameras.

You can choose the **MAIN STREAM** for all cameras by clicking : 

You can choose the **SUB STREAM** for all cameras by clicking : 

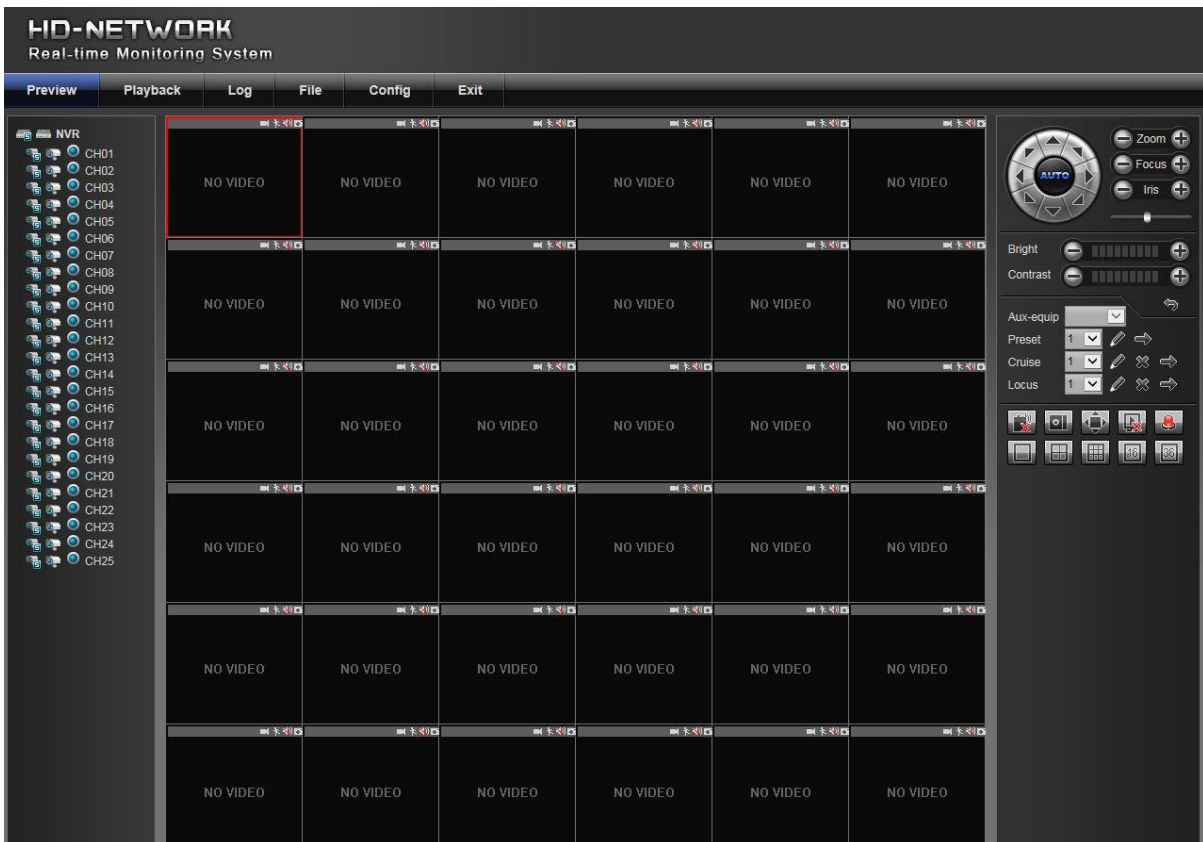
To open single channels click the main stream or sub stream icon next to the channel number.



You can change the screen division by using the following buttons -



The PTZ controls can be found just above the screen division selection. These controls are only used with Pan Tilt Zoom cameras.



Playback

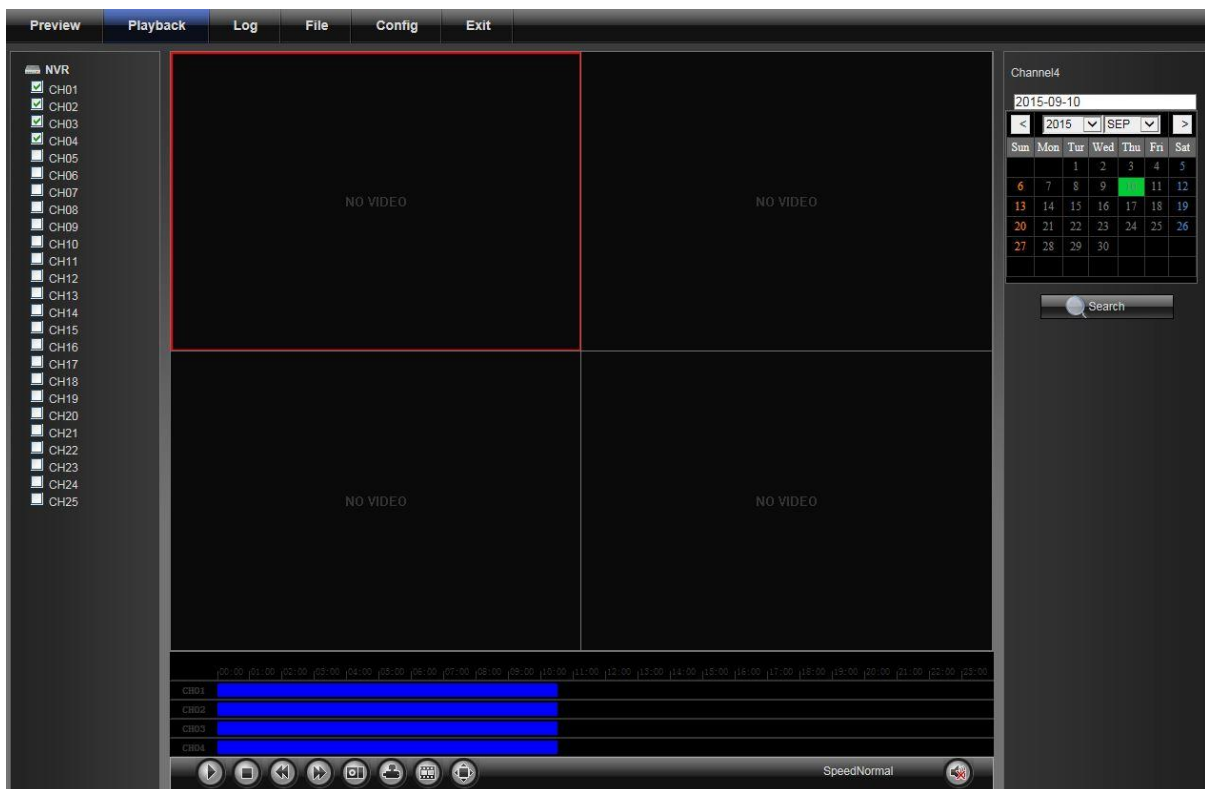
From the PLAYBACK screen you are able to view all your footage saved on the Avengers hard drive.

To play footage:

- 1 - Select up to 4 channel numbers from the left hand side
- 2 - Next choose a day from the calendar on the right then press SEARCH.
- 3 - You should now see the "Time Line" at the bottom of the screen populated with footage (the colours will depend on the record mode).
- 4 - To play the footage simply double click anywhere on the coloured sections of the time line.

To then choose a different day/date you must STOP the footage first

Beneath the time line you will find the playback controls (stop, pause, FF, etc)



Backup

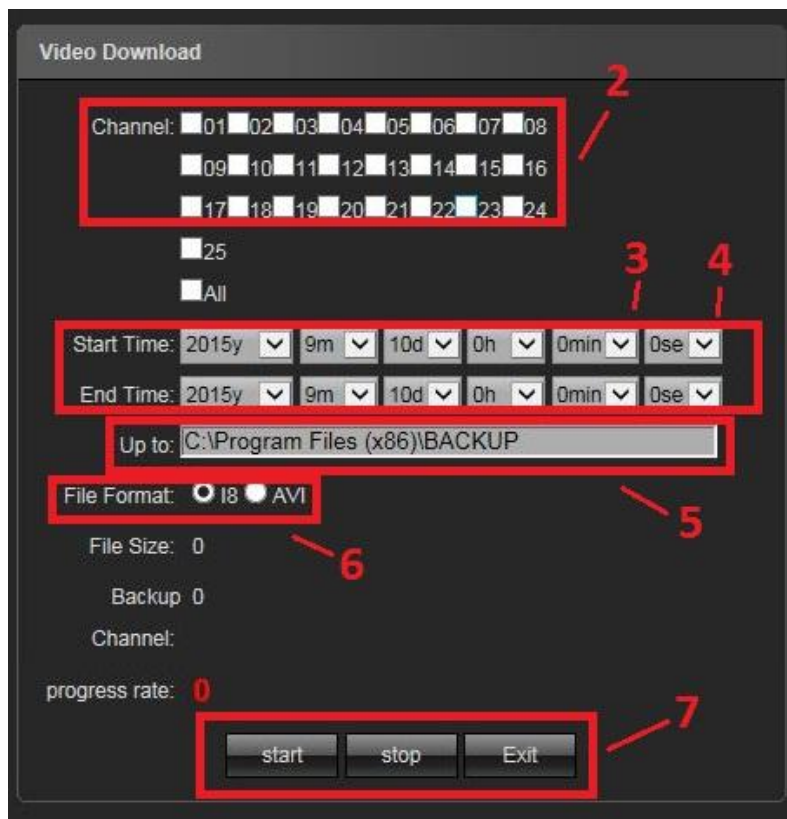
The backup feature will allow you to extract clips of recorded footage and save them to your computer's hard drive.

Before attempting to backup footage you MUST run Internet Explorer in "Administrator mode" (Run as Administrator)

To backup footage:



- 1 - First click on the BACKUP icon
- 2 - Next select which channels you wish to back up from.
- 3 - Now enter your START TIME (this will be where you will start backing up from).
- 4 - Then enter your END TIME (this will be where you will stop backing up).
- 5 - Select where you want to save your footage on your computer.
- 6 - Next select which file format you wish to back up into.
 - i8 - This format can be used for evidence.
 - AVI - This format will play on any media player but cannot be used as evidence.
- 7 - Once the above is complete click START to begin the back up. You can monitor its progress via the "Progress Rate".



Config

From the CONFIG tab all settings of the NVR can be accessed.

Warning : It is not advised to alter NETWORK settings remotely as incorrect settings may cause loss of access.

For a complete run down of each menu in the config tab please refer to the MAIN Avenger manual provided with the NVR.

